

PANTEXAN

SPRING 2025

**IMAGINING
THE FUTURE**
Pantex's push for improvement

AMARILLO, TEXAS

PANTEX PLANT

1 **LETTER FROM LEADERSHIP**
Let's tackle these goals together.

2 **MEASUREMENTS FOR THE MISSION**
The Metrology department is about balance and accuracy.

3 **THE WHITE TRAIN**
Do you remember how weapons used to be transported?

4 **FAMILIAR FACES**
PanTeXas Deterrence has assumed control as Pantex's new management and operating contractor.

6 **PARTNERING FOR A PURPOSE**
Pantexans have a generous spirit year-round.

8 **FACILITY MODERNIZATION**
Improvements are coming to the Pantex Plant in coming years.

10 **HEART POUNDING**
It's the season of love - don't take your heart health in "vein."

11 **PANTEX ACCOMPLISHMENTS AND POSTSCRIPTS**

ABOUT THE COVER

Missy Spence is all about balance while working in the Metrology department.

Learn more on Page 2.

Photograph by Adam Baker

CONTRIBUTORS

MANAGING EDITOR

Andrea Caudill

ART DIRECTOR

Allison Roberts

COMMUNICATIONS SENIOR DIRECTOR

Laura Bailey

PUBLIC AFFAIRS MANAGER

Ashlee Estlack

MISSION COMMUNICATIONS SR MANAGER

Whitney E. Watson

PHOTO/VIDEO SUPERVISOR

Phillip Winegeart

CONTENT EDITORS

Melissa McCoy

Bailie Myers

CONTENT WRITERS

Candice Copelin

Angelica V. Medina

Steve Myers

Rachel Smith

Dr. Amberly Winningham

GRAPHIC DESIGNER

Ashley Hildebrandt

PHOTOGRAPHERS

Adam Baker

Michael Schumacher

Johnny Story

The *Pantexan* is published four times a year by PanTeXas Deterrence, management and operating contractor of the Pantex Plant for the U.S. Department of Energy's National Nuclear Security Administration. Pantex is located near Amarillo, Texas. Feedback is welcome at P.O. Box 30020, 79120-0020 or pantexan@pantex.doe.gov. Digital copies will be accessible to everyone from Pantex's public website. If you would rather not receive a physical copy, please email your preference to the email address above, and include your name and badge number.

LETTER FROM LEADERSHIP

Pantexans are competent, skilled, and proud. It has been proven over and over again as Pantexans have guided our mission to protect our nation for more than eight decades.

Pantexans are also dedicated, generous, and service oriented. In addition to executing our mission while keeping the workforce, site, and local communities safe and secure, Pantexans have pushed millions of dollars into our local communities, both by partnering with local small businesses and by supporting our communities through efforts like the Community Investment Fund.

We now move forward facing many opportunities and challenges, both in this fiscal year and in the years and generations ahead. I appreciate our workforce joining me at the recent all-hands meetings, where we talked about the Pantex Strategic Agenda aligned to our goals and objectives that will help enable us to face those challenges and opportunities.

A driving goal for the site is mission delivery – it is why we are all here. I hope we Pantexans continue in Fiscal Year 2025 to step forward to meet and exceed fiscal year requirements and implement strategic initiatives that drive enhanced agility and resilience. This goal is to ensure we execute the mission in Fiscal Year 2025 and prepare us to meet and exceed the needs of our nation for future generations.

Aligned with mission delivery is the Pantexan goal of operational excellence. It is what ensures we maintain the highest levels of performance and strategically optimize processes, driving efficiency and resiliency associated with mission execution. Delivering the mission while exhibiting excellence in safety, security, quality, disciplined operations, continuous improvement, meaningful performance metrics, and processes and systems is part of what makes Pantex incredible.

The third goal in our success framework is being a good Pantex citizen. This goal calls Pantexans to lead, model, and enable the behaviors needed to promote a strong culture of performance excellence. We seek to establish and maintain a workforce that embodies the core values and principles of being a Pantexan.

Pantexans are called to exhibit competency, integrity, and service. There is no better time than now to show how well we can excel in doing just that as we deliver the mission with operational excellence and demonstrate being a good Pantex citizen – a Pantexan. We will do this together for our communities, for the nation, and for the world – for today and for the generations to come.

I am proud to call myself a Pantexan, and I look forward to accomplishing the work we have in front of us together.



Dr. Kelly J. Beierschmitt
President and General Manager

LEADERSHIP

JASON ARMSTRONG | *Manager, Pantex Field Office*

DR. KELLY J. BEIERSCHMITT | *PXD President and General Manager*

MEASUREMENTS FOR THE MISSION

The Metrology department is about balance and accuracy.

By Dr. Amberly Winningham

What is metrology? No, it is not the study of weather. Commonly confused with meteorology, metrology is the knowledge and understanding of calibration measurement concepts. At Pantex, this is vital to ensuring instruments used to inspect and test weapons and safety systems are within specific parameters.

Metrology Technician Missy Spence performs precise calibration, modification, and troubleshooting to ensure the accuracy of instruments that measure complex mechanical, physical, electronic, and health physics. Metrology parameters include all basic measurement quantities such as length, mass, time, current, temperature, force, radiological exposure, and decay rates.

Metrology is not used solely at Pantex. Whether you are weighing yourself on a scale or checking your watch, a metrology technician has checked for calibration accuracy before you used it.

“I love being a metrology tech because it isn’t a career that ever goes stale,” Spence said. “The technology is always changing – this is a career for anyone who loves to learn. My day is never repetitive or mundane. I always have the opportunity to calibrate a different or new piece of equipment.”

Metrology technicians at Pantex have the ability to advance to higher technician positions and manager roles while making a difference in their daily work by contributing to the mission. For Spence, she is leading the way for more women to enter a career in science, technology, engineering, and math, commonly called STEM.

“I have a job I get to be proud of and not one that many women do,” Spence said. “Women belong in STEM careers, and I think metrology is a great place for both men and women.”

A U.S. Air Force veteran, Spence wanted to find a career after her time in the service that provided her the same sense of pride for the United States that she felt when serving in the military. Starting her career at Pantex provided her the same sense of purpose.

“I enjoy being in a role that ensures the safety and security of the United States,” Spence said. “It is a responsibility I take seriously, and I am proud of the work I do every day.”

WATCH A VIDEO ABOUT SPENCE'S
LIFE AS A METROLOGY TECHNICIAN



THE WHITE TRAIN

Do you remember how weapons used to be transported?

By Steve Myers

Travel by train used to be the fastest and easiest option to move around the country. Passenger travel by rail peaked around World War II in the United States before being overtaken by highways, personal automobiles, and aircraft. Today on railroads, freight has replaced most passengers; along with semi-trailers, trains remain the top shipping options, both of which Pantex has employed over the years to move weapons around the country.

From 1951–1987, Pantex used the train for weapons and equipment transportation on the rails. The White Train, operated by the Energy Department’s Office of Secure Transportation, shipped assembled nuclear warheads to military weapon depots.

The aptly named White Train was originally a bright white color, which stood out from other brown, yellow, or orange cars normally seen in freight trains. The cargo cars were designed by Sandia National Laboratories specifically for transport of nuclear weapons.

The amenities were minimal for the crew of seven members, and the train moved at a top speed of 35 miles per hour.

Projects Engineer Bob Roth shared a story about the White Train he had heard about in which an engineer tested the limits of the train’s speed.

“I had a locomotive engineer from the Santa Fe tell me . . . he decided to ratchet up the throttle to go a little faster,” Roth said. “Before he knew it, he had this spotlight in his mirrors. So, he slowed the speed back down and the spotlight went out. He said, ‘They must have known how fast we were going,’ and the truth is, yes, in the escort coach they had something to measure the speed of the train.”

The burgeoning peace movements caused the train to become the focus for peace and anti-nuclear weapons activism. The train’s white color stood out like a sore thumb, and in 1984 the colors on the railroad cars were changed to more closely match other railroad freight cars, but everyone continued to refer to it by its original color.

Use of semitrucks began in 1976, and in 1987 the White Train rolled to a permanent stop at Pantex. In all its years of operation, there was never a major accident involving a White Train.

Pantex Historian Katie Paul earlier this year gave a presentation titled “The Nuclear Express: Cold War Transportation of U.S. Nuclear Weapons” to more than 600 people at the Nuclear Security Enterprise/ Atomic Weapons Establishment Historian Speaker Series regarding this unique piece of Pantex history.



“The fleet of around 100 cars was ultimately dispositioned through several means, including preservation for historical purposes at the Pantex Plant, donation to the Amarillo Railroad Museum, transfer to other U.S. Department of Energy sites for special purposes, and scrap,” Paul said. “Approximately 24 of the original 100 cars are still in existence today.”

Today, a couple of cars still remain at Pantex, sitting silently on the few feet of abandoned rails, a testament to the past.

FAMILIAR FACES

PanTeXas Deterrence has assumed control as Pantex's new management and operating contractor.

By Andrea Caudill

On November 1, PanTeXas Deterrence (PXD) took the reins as the new management and operating contractor (M&O) of the Pantex Plant. Previously, Consolidated Nuclear Security operated the plant in conjunction with Y-12 National Security Complex for a decade.

PanTeXas Deterrence is the sixth M&O since the plant was brought back to production in 1951. The existing contract with NNSA gives a 5-year base period with three 5-year options, which means a possible contract period of up to 20 years if all options are exercised.

While longtime employees had experienced an M&O transition before, for the majority of Pantex employees transition was a new experience. This transition period was a unique experience however, given that transition activities were worked in parallel with site separation activities. Times of uncertainty can cause unrest and potential errors, but in this case, Pantex saw astounding performance in the fiscal year prior to transition. For the duration of the time since NNSA bid the Pantex M&O contract as separate, those responsible for site separation and transition met their major deliverables to move both sites toward autonomous operations, while normal operations at the plant continued. Despite the period of uncertainty, Pantexans delivered the mission with operational excellence, safely and securely.

While the transition was new for many, longtime Pantexans are familiar with some of the leaders returning to the facility.

The assembled leadership team has deep roots at the facility and in the Texas Panhandle, with decades of experience at Pantex between its members. President and General Manager Kelly Beierschmitt spent more than a decade at Pantex before serving multiple leadership positions in the industry, most recently at Los Alamos National Laboratory.

The joint venture that makes up PanTeXas Deterrence is also familiar to longtime Pantexans. BWX Technologies Inc. (BWXT) is a leading nuclear manufacturer and was the M&O at Pantex from 2001 to 2014.

Joining them is the Texas-based Fluor, which delivers weapon modernization services at Savannah River and serves at the Naval Nuclear Laboratories and Los Alamos National Laboratory.

SOC, A Day & Zimmerman Company, was also a part of the CNS contract and specializes in security and emergency operations services solutions and has provided support at facilities including Pantex and Y-12, among others.



Many Pantexans walking into the John C. Drummond Center pass the Texas A&M University System display every workday, and the prestigious educator will offer expertise in integration between sites, as well as the development of the future workforce. The Texas A&M University System is additionally a parent company in Triad National Security LLC, which operates Los Alamos National Laboratory.

The parent companies are joined by small business subcontractors including the veteran-owned TechSource, Inc., which was named the 2024 Department of Energy Small Business of the Year; the woman-owned Los Alamos Technical Associates, Inc., which has provided 5 years of environmental services at Pantex; and Mission Assurance Alliance, LLC, which offers mission assurance and nuclear safety capabilities.

As longtime Pantexans themselves, the leaders understand the fierce pride of the employees who work at the plant and serve the mission daily. PXD's culture of excellence is "Pantex Proud, Mission Focused, and Service Minded."

Pantex Proud

All current and new employees understand the important role they play in national security and can be proud of their contribution at Pantex.

Mission Focused

All employees at Pantex come to work ready to focus on fulfilling the missions of Pantex at the highest levels of safety, security, quality, and effectiveness.

Service Minded

PXD and its employees understand the important service they provide in keeping our nation safe and strong and value being able to volunteer time and contribute to worthy causes in service to area communities.



The focus for the mission at the plant is summarized as "Deliver Today, Optimize for Tomorrow."

This includes optimizing production operations to meet current and future mission needs; enhancing integration to deliver the complete mission; modernizing infrastructure and deploying new technologies to deliver the plant of the future; and elevating workforce planning, recruitment, and development to deliver the workforce of the future.

"We're focusing on safely and securely delivering our mission, with production-based resilience and long-term development of an optimized workforce and site," Beierschmitt said.

“We appreciate the effort of everyone involved in making this transition as seamless as possible. Our focus is on Pantexans and carrying out the mission we have been given to protect our families and friends and the United States of America.”

- Kelly Beierschmitt

PARTNERING FOR A PURPOSE

Pantexans have a generous spirit year-round.

By Rachel Smith

At the heart of every successful partnership lies a shared vision, a common goal, and a desire to make a difference. Whether it's supporting education, providing disaster relief, or helping those in need, Pantex's efforts to reach out to the surrounding community are guided by the belief that community support fosters resilience and opportunity for all.

"The communities surrounding Pantex are where we live, play, and raise our families," said Pantex President and General Manager Kelly Beierschmitt. "The investments we make in our communities open doors of opportunity for everyone. Partnerships like this allow us to create meaningful change for our families, friends, and neighbors."

Sponsorships are more than just financial contributions.

"We want to be in the communities, supporting education, organizations, and causes with donations and volunteers," Beierschmitt said. "This service reflects our commitment to creating connections that extend beyond the Pantex site and into the lives of others."

Education is a key focus of Pantex's efforts, empowering students to explore new opportunities and reach their potential. Programs like the Texas Tech Innovation Challenge provide insight into national security, while the Bushland Independent



School District robotics program and AmTech Career Academy's School of STEM and Information Technology expose students to specialized coursework in robotics, sparking creativity and innovation.



Pantex's partnerships extend to organizations that address critical needs, such as the 100 Club of the Texas Panhandle, an organization dedicated to supporting families of fallen or injured law enforcement officers and firefighters. Another key partner is the United Way of Amarillo & Canyon, which works to improve quality of life for individuals and families by addressing critical needs in education, financial stability, and health. In 2024, Pantex supported the Amarillo Area Foundation's Panhandle Disaster Relief Fund and the Hutchinson County United Way, both of which played vital roles in helping communities rebuild and recover following last year's devastating wildfires.

During the holiday season, Pantexans actively participated in the Pantex Christmas Project, a long-standing tradition spanning 69 years. This initiative allows Pantexans to purchase toys and clothing for families in need within our community.

"We are so happy to be able to help so many deserving families each year," said Pantexan Lennet Hernandez, who has dedicated 25 years to the cause. "It truly is the highlight of the holiday season."

The program has a wide reach.

"This year alone, the project helped 58 children, 27 families, and 10 elderly community members, while also distributing 88 gift cards to teens in need," said Tamara Packard, an 18-year volunteer.

The commitment to addressing community needs

continues with partnerships like The Salvation Army's Red Kettle Campaign. Dedicated employees volunteer to ring bells outside stores, raising funds that stay local and support services such as food assistance, shelter, and social programs.

"It has become a meaningful way for Pantexans to show their love and support for the community," said Community and Educational Outreach Coordinator Darla Fish.

Pantex has also supported the High Plains Food Bank's Together We Can Food and Fund Drive for the past 20 years. Through this effort, every dollar donated provides nine meals to help feed individuals and families across the 26 counties in the Texas Panhandle.

"Our partnership with the High Plains Food Bank strengthens our community by ensuring children, seniors, and families have access to nutritious food," Fish said. "This commitment to helping those in need is something that makes me truly proud to be a Pantexan."



Through local sponsorships, Pantex aligns with organizations that share its values, fostering collaboration and amplifying community impact. These efforts reflect Pantex's mission to serve not only through financial contributions but also through volunteerism.

"We are incredibly grateful to our employees for their dedication and generosity," Beierschmitt said. "Their willingness to volunteer their time and energy to help others is what truly brings our mission to life."

FACILITY MODERNIZATION

Improvements are coming to the Pantex Plant in coming years.

By Candice Copelin

The history of the Pantex Plant is something to take pride in and remember. Some employees live that history daily, working in approximately 40 of the original buildings still used today.

Though history is important, plans to move forward are underway. Plant modernization is a key goal for Pantex, with details for the transformation of the site mapped out over the next 25 years.

While there are large line-item projects coming up, small renovations and updates to vital systems are also in the works. Facilities will be upgraded with new technology and enhanced workspace accommodations for the workforce.

Some projects will be done one at a time, like line

items, but for the most part, these projects will be logically planned and constructed in a phased approach. This method allows multiple small facilities to be built at the same time, at various project phases. This provides a more cost-effective strategy for the National Nuclear Security Administration and allows Pantex contractors and subcontractors to navigate supply-chain issues.

“Pantex’s commitment to the safety of employees and the nation remains top priority,” said Director of Infrastructure and Modernization Scott Kennedy. “Bringing in new technology, updating machinery, and modernizing facilities improves safety and security for all. Many of these changes will grow the mission at Pantex and prepare the site for decades ahead.”





Line-Item Projects

There are several large line-item projects that are in the pipeline or are currently in progress at Pantex. The first of these to be completed is the High Explosives Science and Engineering Facility. This facility will provide workspace for the growing Pantex population and laboratory space that is currently spread across more than a dozen facilities, which on average are 68 years old.

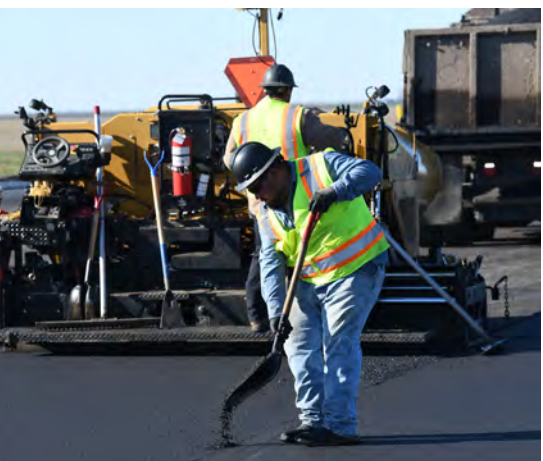
This will be in close proximity to the new High Explosives Synthesis, Formulation, and Production Facility, scheduled to start in FY 2026, which will house the production of reliable high explosive powder that is currently being produced across several aged facilities and with an outside contractor.



General Plant Projects

There are other, smaller projects across Pantex known as general plant projects. These are projects that have an expense of less than \$34 million. The first building that has been completed is the Advanced Fabrication Facility, which will house inert machining fabrications that support high explosive operations and allow the current World War II- and Cold War-era buildings to be retired. It celebrated its ribbon cutting in January (see Page 11).

Work with environmental sampling and analysis is currently held in the off-site Kilgore Facility. That lease with Texas Tech expires in 2025, requiring the new Environmental Sampling Facility to replace it. Having this new building will allow for an on-site sampling facility to ensure that Pantex is following all state and federal environmental guidelines.



Smaller Projects/Facility Upgrades

Pantex is updating the electrical distribution system that supports the functionality of the plant. While certain sections of the plant have undergone electrical upgrades, secondary work has also happened in those areas, such as renovated parking lots and repairs to roofs, ramps, and other small but necessary projects.

Strike teams have been assembled to replace heating, ventilation, and air-conditioning units across the site. The Fix It Now program has also been established to complete small projects quickly and across the plant to improve quality of life for all Pantexans.

HEART POUNDING

It's the season of love - don't take your heart health in "vein."

By Angelica V. Medina

It is the monster in the room that we don't like to talk about. Heart disease is the leading cause of death in the United States. It manifests itself in many ways, including coronary heart disease, which can lead to heart attacks, strokes, and heart failure.

The U.S. Centers for Disease Control and Prevention says that in 2022 about one in five deaths in the United States came from heart disease. The good news is that there are a number of steps to prevent or lower the chance of heart disease. By adopting a heart-healthy lifestyle, you can potentially reduce the risk of heart disease and its risk factors.



Take control over your heart health by following some reasonable and achievable tips:

Quality Sleep

Aim for seven or more hours of sleep each night and keep a consistent sleep schedule. Avoid electronics, large meals, and caffeine right before bedtime.

Eating Habits

Sustaining flexible and balanced eating habits can help deter heart disease. Try a mix of lean meats or fish and buy foods lower in saturated fats, sodium, and added sugars.

Maintaining Healthy Weight

Staying hydrated with water and choosing healthy snacks can help you control your weight. If you are struggling to maintain your weight, consider logging what you eat throughout the day.

Physical Activity

Adults should spend a minimum of two-and-a-half hours doing physical activity each week. If you are on a time budget, try a quick walk or trip up the stairs — anything to get your heart beating faster.

Smoking

Any amount of smoking can damage your heart and blood vessels. Talk with your healthcare provider about tips and programs to help you quit.

Cholesterol

Limit alcohol consumption, eat foods lower in saturated fats and higher in fiber, and engage in regular physical activity to keep from increasing your cholesterol.

Blood Sugar

Eating a diet rich in vegetables, fruits, whole grains, lean protein, and healthy fats while monitoring your carbohydrates can help maintain a stable blood sugar.

Stress Management

Healthy coping strategies can help improve your emotional and physical health. Consider meditation or yoga to help lower stress and improve mindfulness.

Practice Self-Care

Make yourself a priority. Aim for one positive action for your heart health each day like scheduling a doctor's appointment, joining an exercise class, confiding in a family member or friend, or journaling.

Making your heart health a priority means being patient with yourself and your body. You may not see immediate results of your actions, but remember small steps can lead to big results.

If you would like help improving your health through better nutrition, reach out to LiveWise's Registered Dietitian Tessa Pendergraft. She can assess your current eating habits and nutritional status and develop a personalized nutritional plan specifically for you and your needs.

COMMUNITY GRANTS

PANTEX DISTRIBUTES MONEY TO LOCAL COMMUNITY

Twelve Texas Panhandle nonprofits received a total of \$117,070.53 from the Pantex 2024 Community Investment Fund Grants. The program in 9 years has distributed more than \$1.34 million. The nonprofits include Against All Odds Social Services, Amarillo Independent School Foundation, Amarillo Little Theatre, Another Chance House, Brothers-Sisters of Our Military Adventures, Camp Alphaie, Downtown Women's Center, Dumas Education and Social Ministries, Family Support Services, Martha's Home, Texas Ramp Project, and Transformations by Amarillo Angels.



AFF RIBBON CUTTING

DEVELOPMENT AND TESTING HAS AN IMPROVED SPACE

In January, Pantex hosted a ribbon cutting for its newest building, the Advanced Fabrication Facility, which replaces structures built nearly 80 years ago. The AFF will provide a cleaner and more efficient workspace for development and testing operations.

“Completion of this facility is another example of our commitment to our mission and to our designation as the National Nuclear Security Administration High Explosives Center of Excellence for manufacturing,” said Pantex Field Office Manager Jason Armstrong.



LARGEST PANHANDLE EMPLOYER

PANTEX HAS BECOME THE TOP EMPLOYER IN THE AREA

During World War II, the Pantex Ordnance Plant was a major contributor during the global conflict. At its height in January 1943, Pantex employed its peak of 5,254 full-time employees.

This past fall, Pantex became the Texas Panhandle's largest employer, with more than 4,600 employees to facilitate the growing workload.

“The economic impact of Pantex on our community – and the entire Panhandle – cannot be overstated,” said Pantex Field Office Manager Jason Armstrong. “It's something we're very proud of.”



FIRST AND LAST

MAJOR MILESTONES ACCOMPLISHED AHEAD OF SCHEDULE

In 2024, the first fully qualified reuse pit for the W80-4 nuclear warhead was Mark Quality stamped by NNSA, verifying acceptance for production use months ahead of schedule.

In December, the last production unit of the B61-12 was completed. The B61 nuclear weapon has been in service since 1968, with numerous performance modifications. For more than a decade, thousands of workers across the nation's Nuclear Security Enterprise have focused on the B61's life-extension program, extending its service life by at least 20 years.





Pantexan Marley Hoggatt regularly finds herself giving presentations and teaching classes to large groups of employees. While the mere thought of speaking in front of an audience causes many to recoil in terror, it is second nature for Hoggatt thanks to her years of experience playing to a crowd.

Her parents tried to help her shyness by signing her up for theater camp at Amarillo Little Theatre (ALT). Now all grown up, Hoggatt is starring in shows at the Amarillo institution established in 1927.

LEARN MORE ABOUT ALT AND HOGGATT

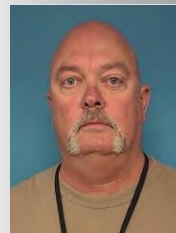


Pantex Obituaries

TWO ACTIVE PANTEXANS HAVE PASSED AWAY, AND WE OFFER CONDOLENCES TO THEIR FAMILIES, COWORKERS, AND FRIENDS.



KARL BERGE, A PANTEX MATERIAL HANDLER WHO JOINED IN 2015, PASSED AWAY ON NOVEMBER 16, 2024.



TRACY LEBOW, A PRODUCTION TECHNICIAN WHO JOINED IN 2022, PASSED AWAY ON JANUARY 1, 2025.



Pantex hosted a campaign to support United Way with a number of events, from FUNdraisers during lunch hours, to storage room sales, to “flocking” work friends’ offices with friendly stuffed flamingoes. These fun events raise money for local chapters of United Way, which work to help the community improve health, income, education, and basic needs.

The campaign raised more than \$470,000. This was a 6% increase from last year and a 15% increase in employee giving. It is the largest total donation and largest employee contribution in the past five years.

MEDICAL DEVICE USAGE

ENSURE PROPER MEDPED USE

Medical personal electronic devices are devices prescribed by a licensed physician and needed to diagnose or treat an illness, injury, condition, disease, or its symptoms and that meet accepted standards of medicine. This can include personal medical electronic devices capable of recording information or transmitting data.

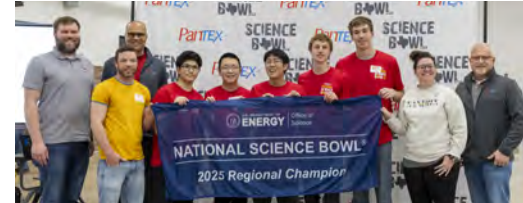
All Pantex employees, visitors, and subcontractors who require access to a security area must have MEDPEDs and peripheral devices reviewed and approved. Visit the Employee page on The Zone or contact Medical for more information.

FEBRUARY

15

Pantex Regional High School Science Bowl

High school teams from around the region will battle in this Pantex-sponsored event. The winners earn a trip to the National Science Bowl.



FEBRUARY

27

Introduce a Girl to Engineering

This conference encourages students grades 6-12 to pursue careers in science, technology, engineering, and math fields. The event is sponsored by the Women In Nuclear (WIN) Employee Resource Group.



SECOND FRIDAY OF

EVERY
MONTH

Toddler Tracks 🕒 9-11 a.m.

Bring your little explorers 5 and under for nature-themed story time, crafts, and a nature walk.



Wildcat Bluff Discovery Center,
2301 N. Soncy Rd.,
Amarillo

MULTIPLE DATES IN

MARCH

James and the Giant Peach

Amarillo Little Theatre will host this toe-tapping musical adapted from the famous Roald Dahl children's book. Visit www.amarillolittletheatre.com to see dates and times and buy your tickets.



Amarillo Little Theatre,
2019 Civic Circle,
Amarillo

APRIL

11-13

Yellow City Comic Con

The largest community annual fandom in the Texas Panhandle returns with everything from cosplay to special guests to vendors.



Amarillo Civic Center,
401 S. Buchanan,
Amarillo

APRIL

24-26

Bob Wills Day Celebration

Make tracks to Turkey, Texas, for a weekend of celebrating Texas music and culture. The festival is named after Wills, one of the founders of Western Swing who grew up near the city. Enjoy concerts, dances, cookoffs, and much more. Visit www.bobwillsday.com for more information.



602 Lyles
Turkey, Texas

MAY

6

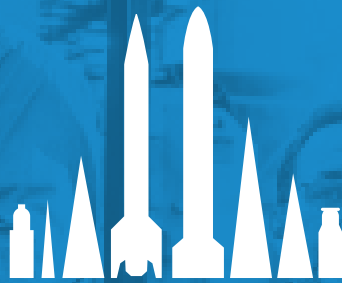
STEAM Day with the Sod Poodles 🕒 11 a.m.

Gather your young science and sports fans and head to Hodgetown to watch the local Double A affiliate team play, and enjoy games, music, and hands-on educational experiences.



Hodgetown Stadium,
715 S. Buchanan,
Amarillo

Disclaimer: This work of authorship and those incorporated herein were prepared by Contractor as accounts of work sponsored by an agency of the United States Government. Neither the United States Government nor any agency thereof, nor Contractor, nor any of their employees, makes any warranty, express or implied, or assumes any legal liability or responsibility for the accuracy, completeness, use made, or usefulness of any information, apparatus, product, or process disclosed, or represents that its use would not infringe privately owned rights. Reference herein to any specific commercial product, process, or service by trade name, trademark, manufacturer, or otherwise, does not necessarily constitute or imply its endorsement, recommendation, or favoring by the United States Government or any agency or Contractor thereof. The views and opinions of authors expressed herein do not necessarily state or reflect those of the United States Government or any agency or Contractor thereof.



our **MISSION**
CAN BE YOUR MISSION, TOO

THE

PANTEXAN

is filled with stories
about people who
support our mission
and make our plant
great.

Want to join the
Pantex team or know
someone who does?

SCAN the QR



OR VISIT



PANTEX.ENERGY.GOV/CAREERS



**PanTexas
Deterrence**

PanTEX

PO BOX 30020
AMARILLO, TX 79120

WE'RE SOCIAL



@PantexPlant